

# ERIEZ



# AGGREGATES

EQUIPMENT FOR THE AGGREGATE INDUSTRY



**ERIEZ**  
GLOBAL LEADER IN SEPARATION TECHNOLOGIES

## About Eriez

Established in 1942, Eriez stands as a pioneering force in separation technologies, embodying a truly global presence.

With 12 wholly owned subsidiaries spread across the globe, we proudly design, manufacture, and support our magnetic separation, flotation, metal detection, and material handling equipment on an international scale.

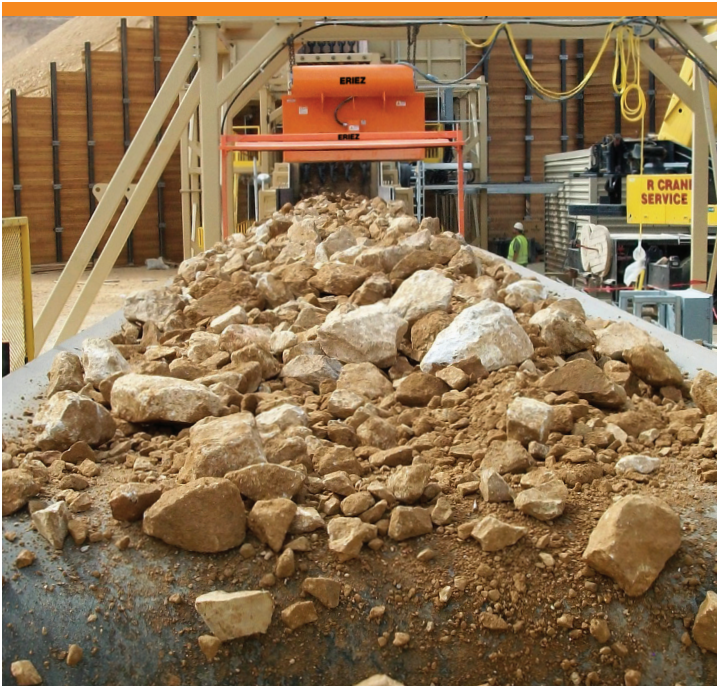
Our dedicated team of knowledgeable and experienced sales engineers collaborates closely with customers, understanding their unique challenges to deliver dependable, high-performance equipment, systems, and solutions.

Whether clients require our standard equipment or bespoke solutions tailored to their precise specifications, Eriez delivers.

Drawing from more than 80 years of experience across diverse industries, including mining and minerals processing, food processing and packaging, aggregates, metals recycling, and many other sectors, Eriez leverages its extensive experience to design and supply products that elevate productivity, efficiency, and product purity.

Eriez remains steadfast in its commitment to setting the global standard for excellence in key technologies, driving innovation and reliability across industries worldwide.

# Our Capabilities



## Tramp Metal Protection & Material Handling Solutions for the Aggregate Industry

With more than 80 years of industry experience, Eriez understands the risks associated with tramp metal contamination in aggregate processing applications. Magnetic separation and metal detection solutions from Eriez prevent tramp metals from tearing conveyor belts and damaging downstream crushers, grinding mills, and other expensive equipment.

In addition to critical equipment protection, aggregate processors gain the following when investing in Eriez equipment:

1. Improved product quality and purity
2. Enhanced Safety
3. Increased operational efficiency
4. Increased productivity and uptime

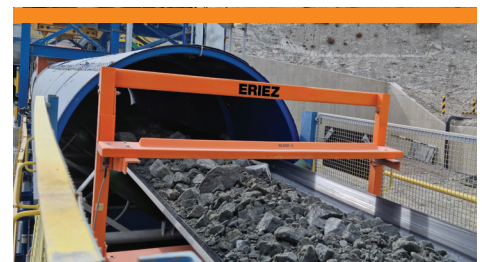
### Large Magnetic Separators

Our large magnetic separators, such as suspended magnets and drum separators, are designed to continuously protect equipment and ensure product purity.



### Metal Detection

Rugged and reliable metal detection technology from Eriez provides automatic detection of dangerous ferrous and nonferrous tramp metal contamination from conveyed materials.



### Vibratory Feeders and Conveyors

Eriez vibratory feeders and conveyors are capable of moving high volumes of raw materials while providing precise metering.





## Large Magnetic Separation Equipment

Eriez specializes in providing magnetic separation solutions to enhance the efficiency, safety, and quality of your production processes. Our large magnetic separators, such as suspended magnets, magnetic head pulleys, and drum separators, are designed to continuously and automatically protect your equipment and ensure product purity for years to come.

## Suspended Electromagnets

Suspended Electromagnets provide tramp metal removal from conveyed materials. The electromagnet is typically mounted or suspended over a conveyor belt to remove large pieces of tramp metal that represent a hazard to downstream crushers, mills, pulverizers and grinders. Suspended electromagnets also remove sharp metal that can damage or tear expensive conveyor belts, especially at transfer points.



## Suspended Permanent Magnets

Suspended Permanent Magnets are an effective method for removing unwanted iron from heavy burdens of material being conveyed on fast moving belts. They are ideal for separation applications on wet or dry, fine or coarse materials in large or small tonnages. Offering uninterrupted magnetic protection, suspended permanent magnets provide processing machinery safety from tramp iron and assure high product purity.



## Magnetic Pulleys

Widely used as head pulleys in belt conveyors, Magnetic Pulleys from Eriez provide automatic removal of unwanted iron from materials conveyed on belts to prevent machinery damage and product contamination for sand, gravel, limestone, mining, rock product, and coal handling operations.



## Permanent Magnetic Drum Separators

Eriez' Drum Separators remove both large and small pieces of iron contaminants from material processing lines. Powerful permanent magnets enable more efficient separation performance for a broader range of applications than ever before. They provide years of trouble-free automatic removal of tramp iron from heavy flows of bulk materials, including large and highly abrasive materials.



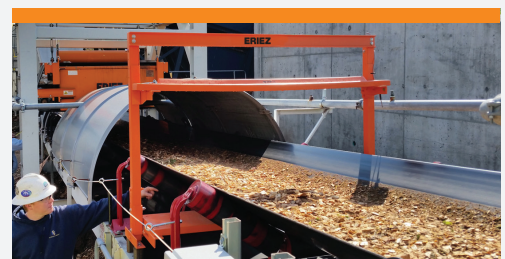


## Pulse Induction Metal Detection

Eriez designs, develops, manufactures, and markets industrial metal detection with a focus on high sensitivities with the industry's easiest-to-use interface. The best metal detector is the one that's correctly calibrated to your specific application and product – Eriez has spent considerable time designing our metal detection equipment to be the easiest to use metal detector in the industry.

### 1200 Series Metal Detector

Detect both ferrous and non-ferrous tramp metal in magnetic ores, highly mineralized products and food products even when conveyed on steel cable belts.



### MetAlarm Metal Detectors

The MetAlarm's lightweight design proves easy maneuverability and quick installation. In most cases, it can be installed with little or no adjustment to idler spacing.





## Vibratory Feeders

Ideal for handling coal, ore, and aggregates, Heavy Duty Vibratory Feeders from Eriez offer controlled feeding for tough high-volume applications.

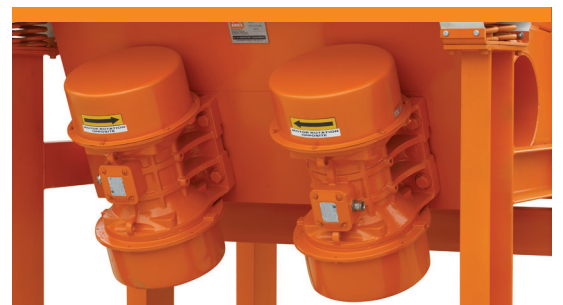
### Heavy Duty Vibratory Feeders

Heavy-duty feeders from Eriez provide a cost-effective means to feed or screen large volumes of bulk material for applications where limited feed rate adjustability is required. Eriez offers three styles of heavy-duty vibratory feeders designed specifically for high volume rugged environments. Eriez feeders are ideal for head-load applications below a hopper, efficiently metering bulk materials to belt conveyors, screens, crushers, and elevators.



### Electric Rotary Vibrators

Electric rotary motor vibrators attach to hoppers or chutes to promote consistent material flow of bulk material. The electromagnetic drive provides years of trouble free operation. Vibrators can cycle up to 30 times per minute.



# ERIEZ

GLOBAL LEADER IN SEPARATION TECHNOLOGIES

## HEADQUARTERS

2200 Asbury Road • Erie, PA 16506-1402 U.S.A.  
+1-814-835-6000 • [eriez@eriez.com](mailto:eriez@eriez.com)  
[www.eriez.com](http://www.eriez.com)

*Note: Some safety warning labels or guarding may have been removed before photographing this equipment. Eriez, Eriez Flotation and Eriez Magnetics are registered trademarks of Eriez Manufacturing Co., Erie, PA.*

©2024 Eriez Manufacturing Co. All Rights Reserved.



**Australia**  
Epping, Victoria  
+61 3 8401 7400



**Brazil**  
Belo Horizonte, Minas Gerais  
+55 31 3281 9108



**Canada**  
Delta, British Columbia  
+1 604-952-2300



**Chile**  
Las Condes, Santiago  
+56 2 29523400



**China**  
Qinhuangdao and Tianjin  
+86-22-8390-4608



**Germany**  
Recklinghausen  
+49 (0)160 94179313



**India**  
Athipet, Chennai  
+91-044-2652-5000



**Japan**  
Urayasu, Chiba  
+81-47-354-6381



**Mexico**  
Querétaro, Tlalnepantla  
+52 555 321 9800



**Perú**  
Surco, Lima  
+51 1 719 4150



**South Africa**  
Boksburg, Gauteng  
+27-11-444-9160



**United Kingdom**  
Bedwas, Caerphilly  
+44-29-2086-8501



**United States**  
Erie, Pennsylvania  
+1-814-835-6000