



HI - VI™
VIBRATORY
EQUIPMENT

Mounting Instructions for Eriez Vibrators

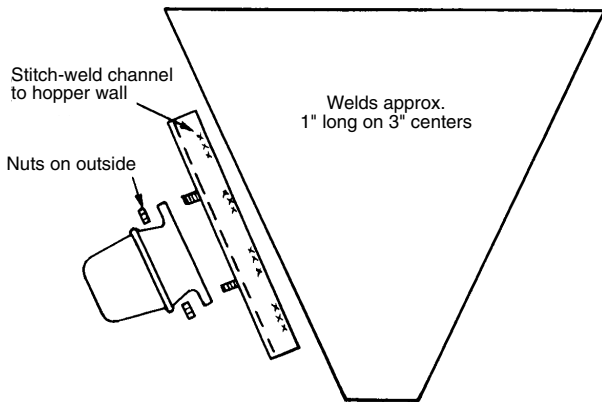


FIGURE 1. Weld locations

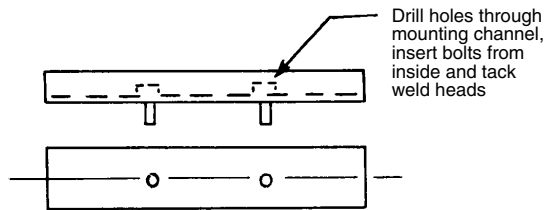


FIGURE 2. Channel detail

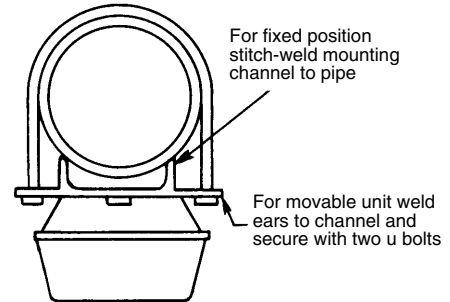


FIGURE 3. Pipe vibrators

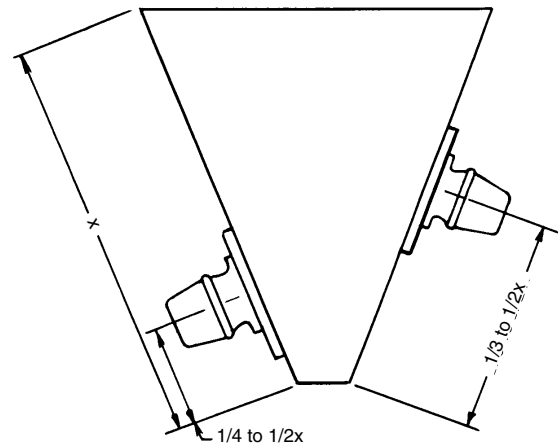


FIGURE 4. Positioning multiple vibrators

After welding, check the channel with a straight edge between mounting studs for flatness. If a crown in the channel is evident, grind the area smooth to insure a FLAT surface to surface contact. A bowed channel can cause the ears on the vibrator to break or cause loss of vibration.

Vibrator	Channel		Approximate		Mounting Bolts	
	in	mm	in	mm	in	mm
D20N	2	51	12	305	3/8-16 x 1-1/2 lg	m10-1.5 pitch x 40mm
D30N, D30P, D30S	2	51	12	305	1/2-13 x 1-1/2	m12-1.75 pitch x 40mm
D40P and D40S	4	102	24-30	610-762	1/2-13 x 1-3/4	m12-1.75 pitch x 45mm
D50P and D50S	4	102	24-30	610-762	1/2-13 x 1-3/4	m12-1.75 pitch x 45mm
D55P and D55S	10	254	36	914	5/8-11 x 2	m16-2.00 pitch x 50mm
D60U	15	381	36-48	914-1219	1/2-13 x 2-1/2	m12-1.75 pitch x 60mm
D70U	18	457	36-48	914-1219	3/4-10 x 2-1/2	m20-2.50 pitch x 60mm

NOTE: All mounting bolts to be SAE Grade 5. *Dimensions and specifications to change without notice.*



World Authority in Advanced Technology for Magnetic, Vibratory and Inspection Applications

Headquarters: 2200 Asbury Road, Erie, PA 16506-1440 U.S.A.

Telephone: 814/835-6000 • 800/345-4946 • Fax: 814/838-4960 • International Fax: 814/833-3348

Web Site: <http://www.eriez.com> e-mail: eriez@eriez.com

Manufacturing Facilities: AUSTRALIA • BRAZIL • CANADA • CHINA • INDIA • JAPAN • MEXICO • SOUTH AFRICA • UNITED KINGDOM • UNITED STATES